

March 2026

2025 Update: Mount Elgon Elephant Project

We wanted to thank you again for your support for this project, which is protecting an important water tower, its associated ecosystem, and the life it supports, and give you this update.

Elephants

Of course, the charismatic cave-mining elephant of Mount Elgon are the nucleus of this project. This year we celebrated the elephant's [range expansion into Uganda](#). In July, an estimated 60 to 100 elephants moved about 10 km into Uganda and stayed for 47 days. This includes two elephants collared in 2024 that were being tracked by satellite, so their precise movements are known. The entire 1,121 sq km of the Uganda side of Mount Elgon is a national park and so the potential exists for a large area of former elephant territory to be recolonized.

The range expansion marks a major conservation success: **the natural recolonization of a species to its historical range is the result of long-term protection, monitoring, and community-based conservation efforts.**

Scouts

The Mount Elgon Elephant Project, Kenya Wildlife Service (KWS) and Kenya Forest Service (KFS) must be complimented for effectively reducing the destruction of the forest by charcoal burners. Scouts played a key role by leading KWS and KFS rangers to areas of high charcoal burning. This resulted in the charcoal burners running away, the charcoal piles being opened and the charcoal turning to ash. Thus thwarted, the charcoal burners have largely stopped in the patrolled areas.

Looking forward

As can happen with wildlife technical pursuits, one of the three elephant collars failed due to a suspected technical fault. For 2026 we are looking to get a couple more collars into important elephant groups to help with monitoring and intervention in Human-Elephant conflict.

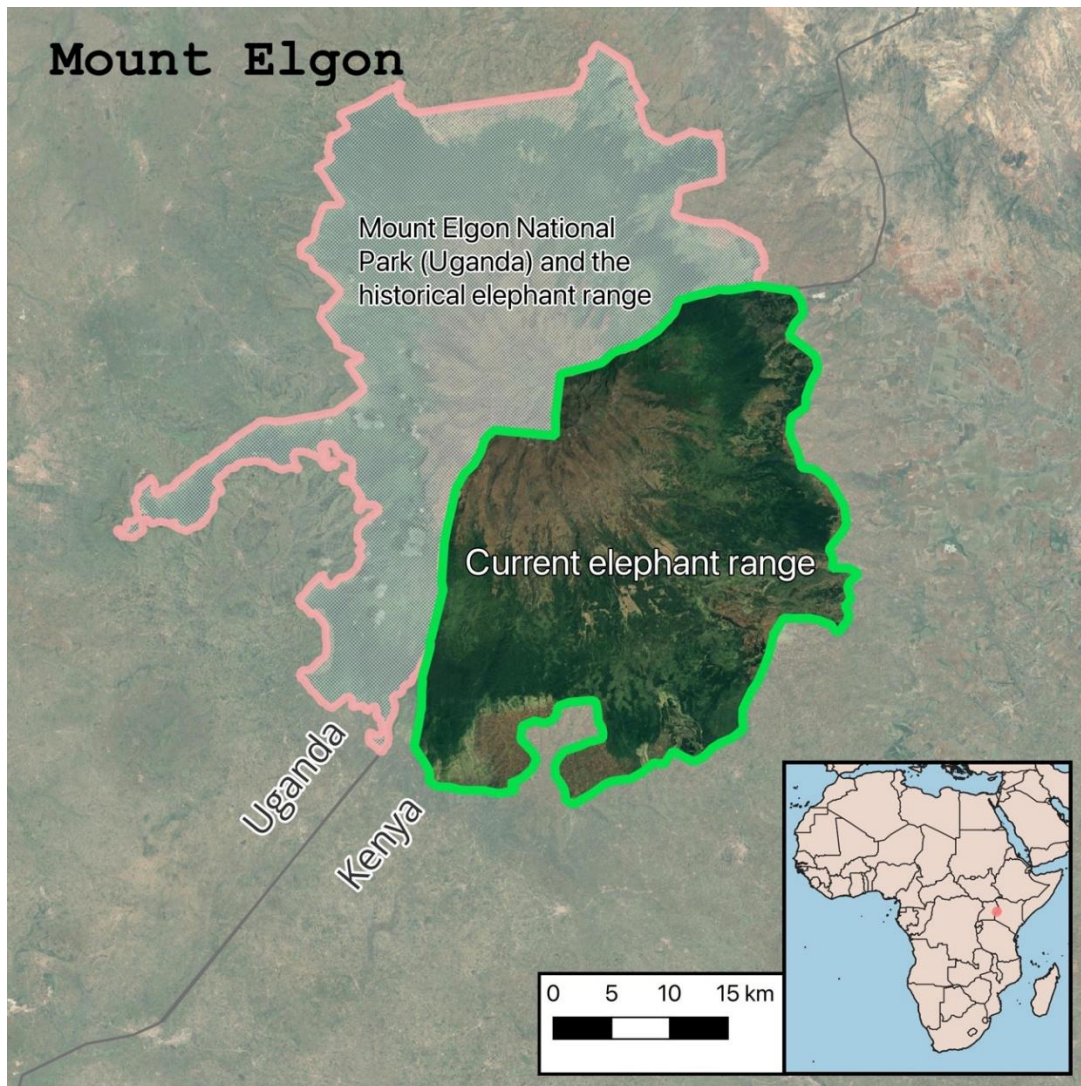


*Drone image of elephants in Uganda with a satellite tracked elephant marked.
Photo Credit: Uganda Wildlife Authority.*

Anecdotal reports indicate the charcoal burning has increased north of Mount Elgon and some charcoal burners have shifted to other damaging ways of making a living. So, the problem of local livelihoods and sustainable resource management has not been solved, perhaps just displaced. In 2026, we will focus on addressing root causes.

Thank you for your support for this project! Please let us know if you have questions or would like to discuss this project or receive further information.

Biome's Project Lead for this project: Andre Boraks, PhD, Director of Programs & Data, andre@biomeconservation.org



The current elephant range on Mount Elgon is limited to the Kenyan side of the mountain. This year documented the first time in 50 years that large groups of elephants were migrating into Uganda for extended periods of time. The Uganda side of Mount Elgon is a gazetted national park and has the potential of doubling the elephant's range size (IUCN African Elephant Specialist Group (2002), UNEP-WCMC World Database on Protected Areas (2023) Google Satellite